

Enables users of netViz Enterprise Server to collaborate on netViz projects in real-time through client software.

### Reduce Mean Time to Repair by Providing Access to Information Through Client Software

netViz Enterprise Client provides employees at medium and large organizations with easy access to netViz maps and diagrams through client software. In the event of a network outage, users can quickly view, navigate and search network topology maps to find and see key business applications and the associated IT infrastructure. By reducing the time it takes to see and diagnose issues, netViz's Enterprise Client helps companies improve customer satisfaction by reducing mean time to repair.

### Control Changes via new Policy Tool

Capacity planners can improve their change management processes by requiring stakeholders to submit requests for configuration changes through netViz Enterprise client. Then, network administrators can view and implement each request, recording their configuration changes in the Enterprise client's note field. By implementing a change management process, CIO's can reduce configuration errors and improve application uptime.

### View Changes through Audit Trail

With netViz Enterprise clients, users can search and view notes about requested and implemented configuration changes. With the click of a mouse, users can open policy and procedure documents associated with a business process and a physical asset. These powerful links can open a related web page, important policy document, an Excel spreadsheet or a PDF file, helping to enforce policy.

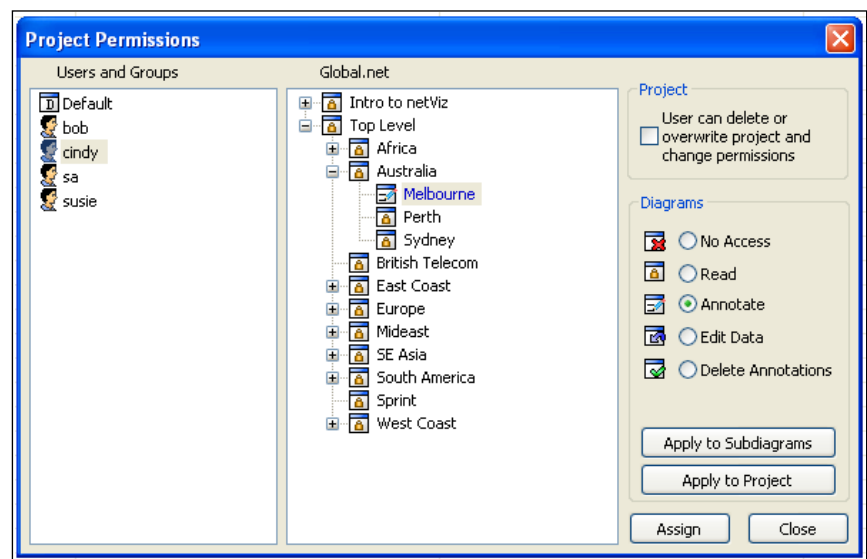
### Decrease Operator Error by Improving Employee Communication

By enabling users to create and share notes and annotations online, netViz Enterprise Client improves communication between key stakeholders, increasing awareness of recent and pending changes to IT infrastructure and related business processes. By increasing knowledge of changes, administrators can keep key stakeholders informed while at the same time restricting access to configuration consoles, reducing operator errors.

### netViz Enterprise Server

Business service problems, including IT downtime, are in most cases due to an improper change or human error. When a problem does occur, the majority of the time to resolve is spent on locating the source. netViz Enterprise Server is a powerful solution to this problem. Use it to manage your business and monitor the changes that are taking place.

- Increases application uptime by improving employee communication to reduce configuration errors.
- Strengthens security by restricting access to netViz maps and diagrams on a per user basis.
- Shows how the information technology infrastructure supports key business processes by displaying easy-to-understand maps and diagrams.
- Brings people and information together to strengthen change control management procedures.



▲ netViz Enterprise's powerful security capabilities provides five levels of security to ensure the right people access, annotate, edit and delete information, purely online.

## netViz Enterprise Project Author

netViz Enterprise Project Author, enables business owners to accelerate decision making by allowing them to find information more quickly. Through netViz, customers can create powerful data-driven graphics, distribute the graphics via the web, collaborate, and effectively manage changes. This set of powerful components and features make netViz unique, and a solution that organizations, including many Fortune 1000 companies, rely on everyday to manage their business.

## netViz Enterprise Adapters

netViz Adapters make it easy to connect netViz to external data sources. The consolidation of enterprise information and technology information make it easy to better understand the business and make critical decisions.

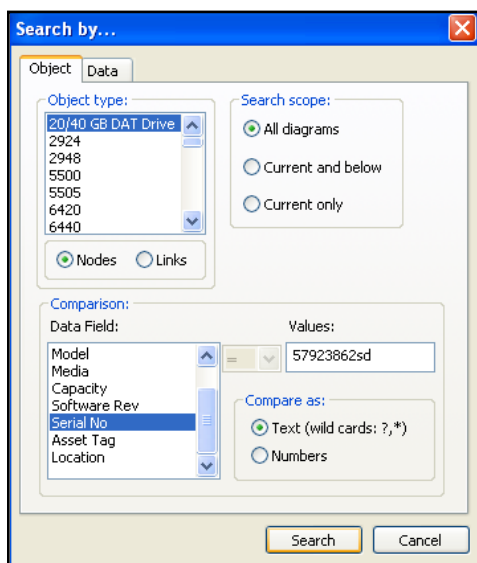
## netViz Enterprise Web

With netViz Enterprise Web, users can view projects via a web browser and conduct powerful, multi-criteria searches through a built-in search engine.

Kenson Netwok Engineering Ltd  
www.nut.eu.com

Corinium House  
Units 101/2 Cirencester Business Park  
Love Lane, Cirencester, GL7 1XD  
Tel:01285 647900 Email:enquiries@kenson.co.uk

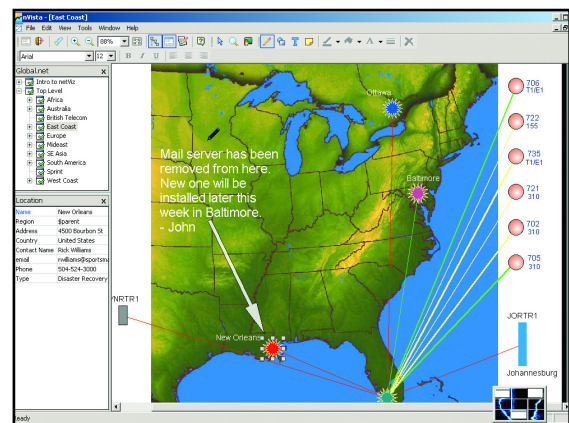
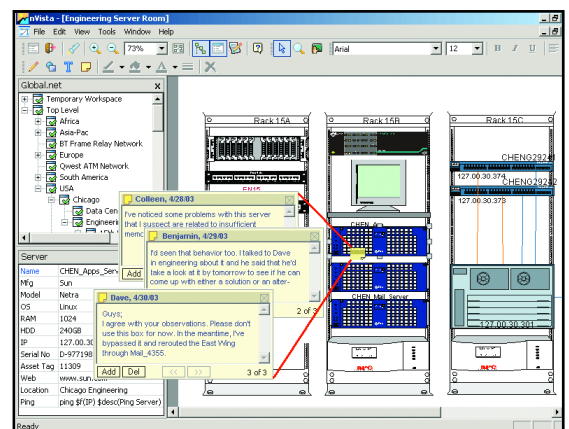
For more information, go to:  
<http://www.netviz.co.uk>



▲ Stakeholders quickly understand capacity requirements and other important trends through powerful, multi-criteria, browser-based search capabilities.

► Regardless if one is using the netViz Enterprise client or netViz Enterprise Web, the same level of information is available to each. However, with netViz Enterprise clients you have more zooming and collaboration capabilities.

► netViz Enterprise Client provides the same level of drill-downs, data display, collaborative note views and functionally as netViz Enterprise clients, but without the need to install any software.



## Key Functions

**Five levels of Access Control**—Powerful multi-level access control allows the right users to access the right information.

**Distributed**—Available from anywhere.

**Real-time Collaboration**—Ability to view annotations and mark-ups directly on the diagrams in real-time.

**Management of Changes**—Ability to see and record all changes taking place in the environment by the individual data owners.

**Data-Embedded Graphics**—Each object in netViz can have an unlimited number of custom data fields associated with it.

**Troubleshooting**—Able to trouble-shoot problems easily with the centralized repository, multi-criteria search and accessible diagrams.

**Consolidation of Enterprise Data**—Able to consolidate any data and explain their relationships.